

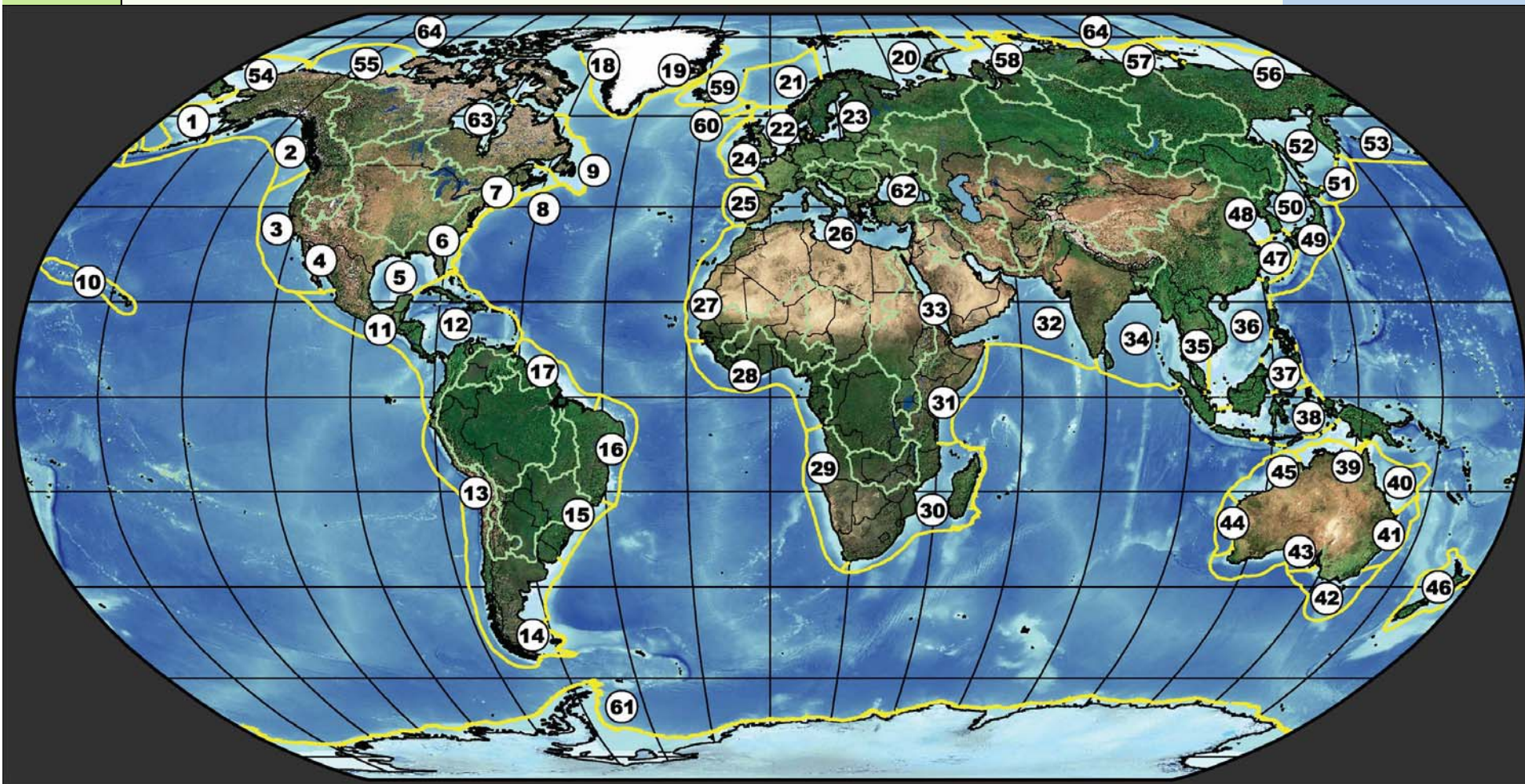


NORWEGIAN MINISTRY OF  
THE ENVIRONMENT

*White Paper No. 8 (2005-2006)*

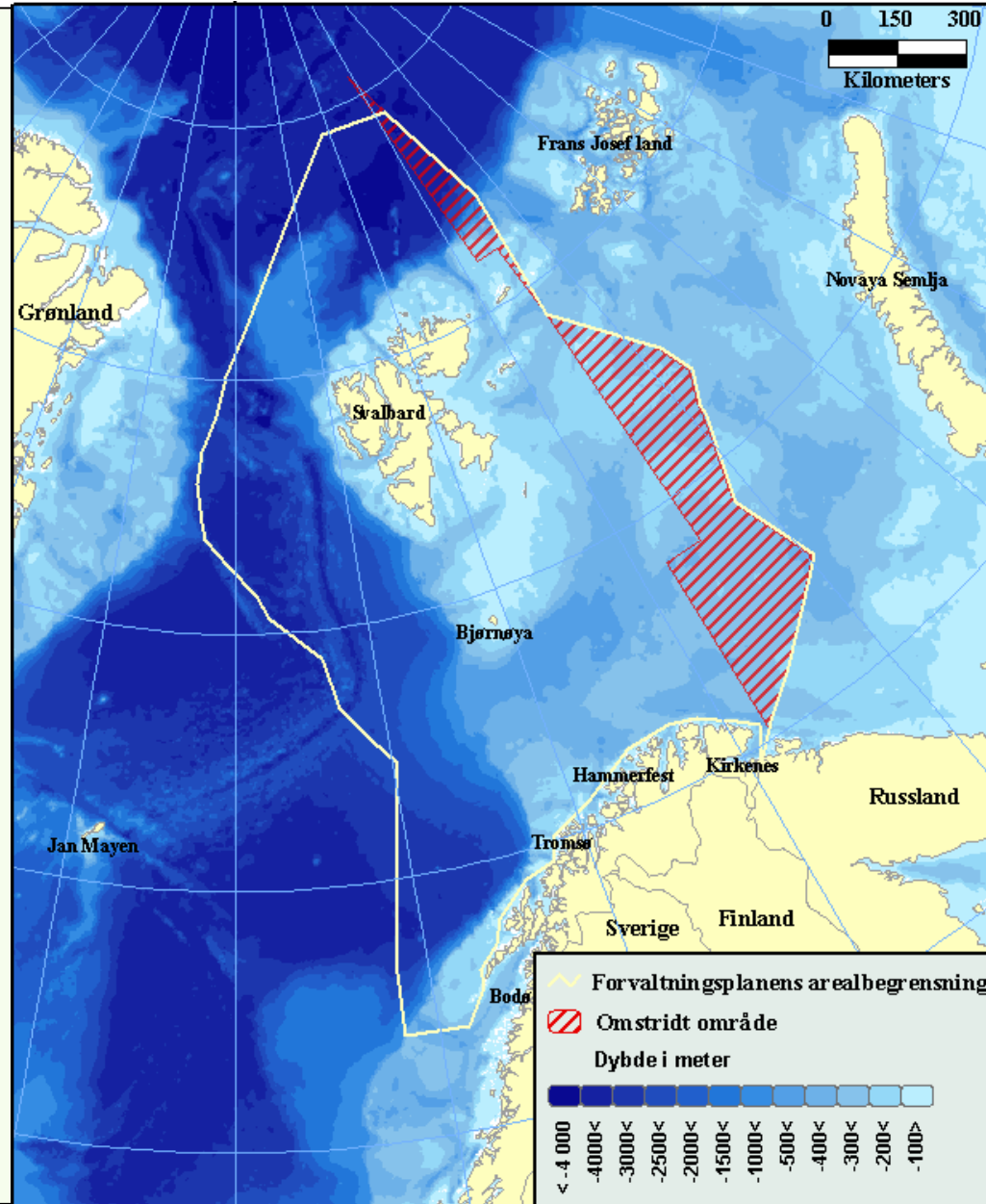
*Integrated Management of the Marine Environment of the Barents Sea  
and the Sea Areas off Lofoten  
(Integrated Management Plan)*

## The World's Large Marine Ecosystems

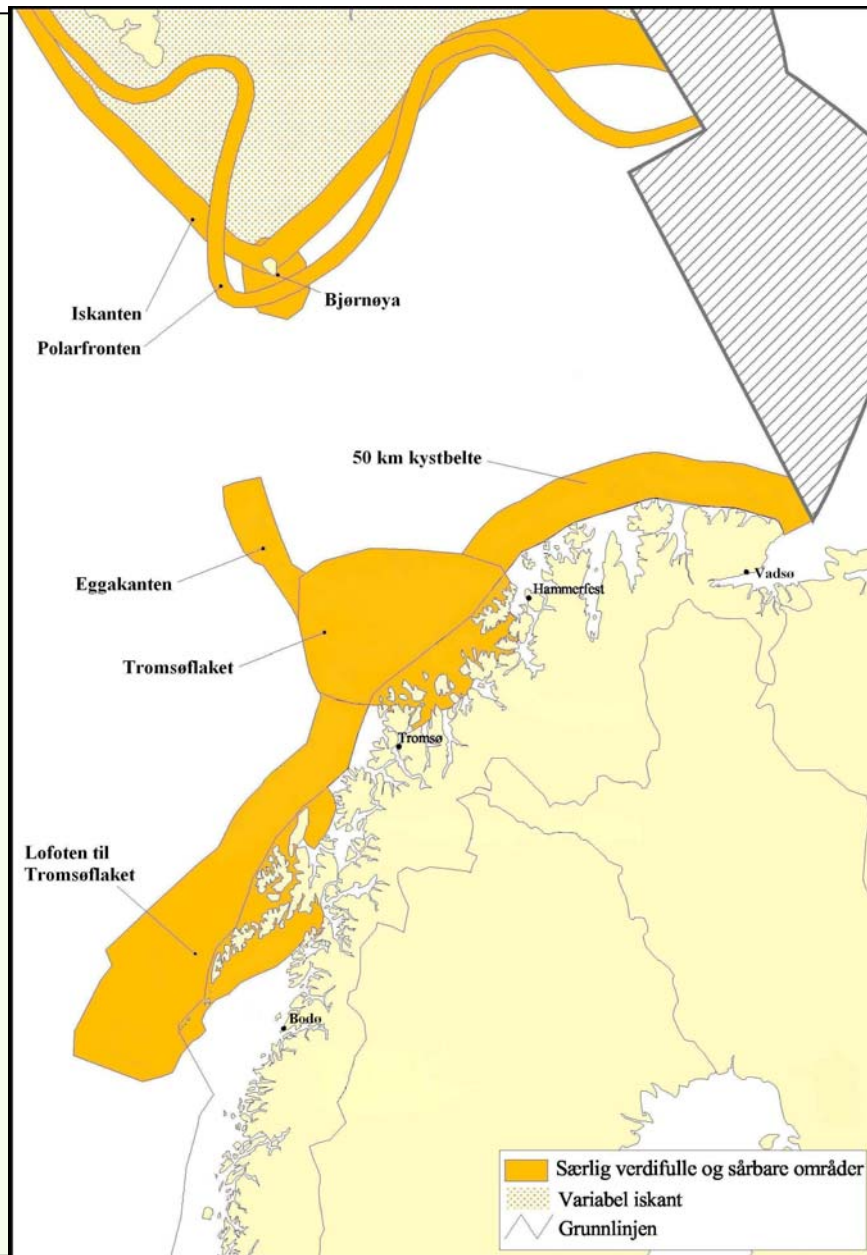


# Integrated Management Plan for the Barents Sea – Lofoten

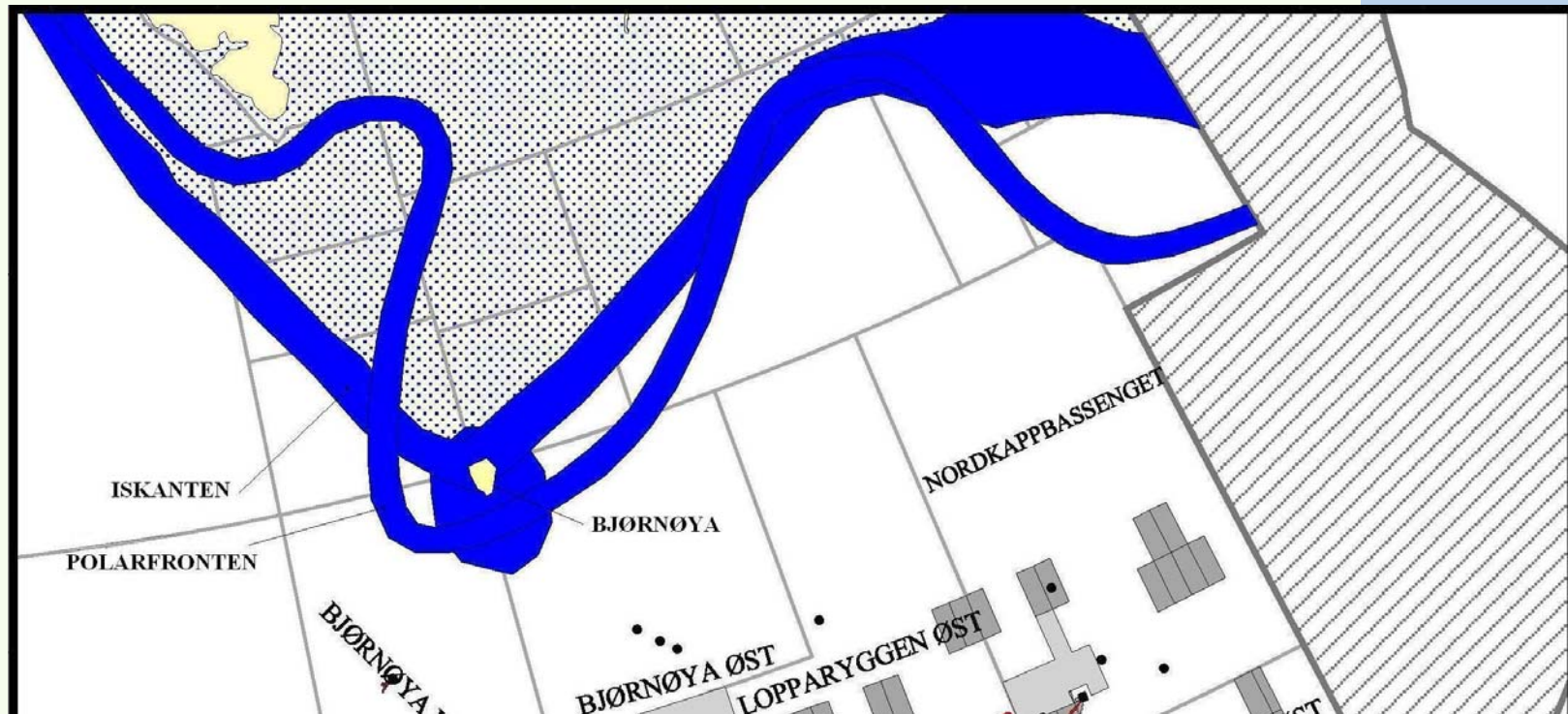
Geographical area



*Particularly valuable and vulnerable areas that require special attention*



*Framework for petroleum activities*



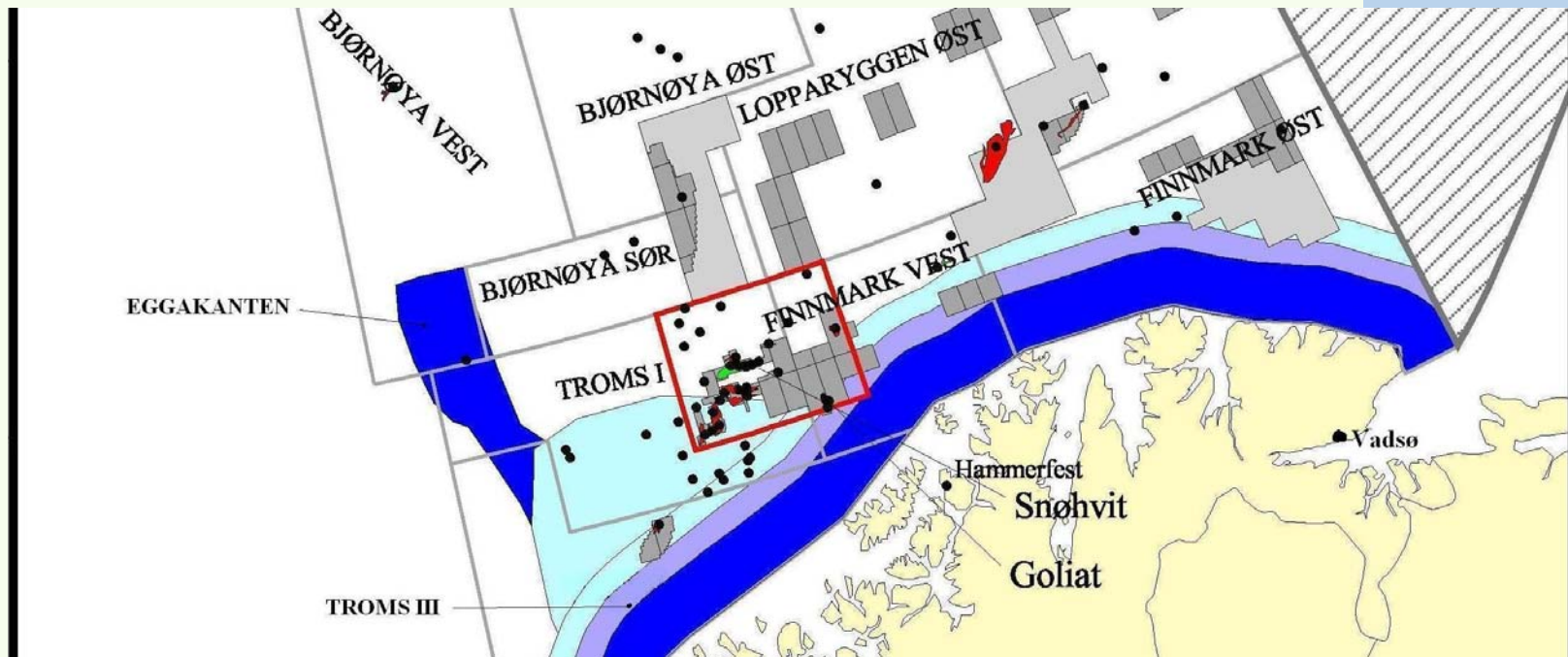
**1. Bjørnøya (Bear Island)**

- No starting-up of petroleum activities in a 65 km zone around Bjørnøya.
- Bjørnøya nature reserve to be expanded to the territorial limit of 12 nautical miles.

**2. The ice edge and the polar front**

- No starting-up of petroleum activities by the ice edge and the polar front

*Framework for petroleum activities*



### **3. The coastal zone along Troms and Finnmark until the Russian border**

- No starting-up of petroleum activities in a belt 35 km from the coastal baseline from Troms II until the Russian border.
- No starting-up of new petroleum activities in the area between 35–50 km from the coastal baseline, with the following exceptions; petroleum activities in places where concessions have already been granted up to (and including) the 19th licensing round; new announcements and licences in the APA-area are permitted and there will be opportunities for the development of additional resources in these areas. The question of petroleum activities in the area from 35-50 km will be considered in connection with the review of the Integrated Management Plan in 2010.
- In the area between 50 km and 65 km from the baseline, exploratory drilling will not be allowed in oil-bearing layers in the period 1 March–31 August.



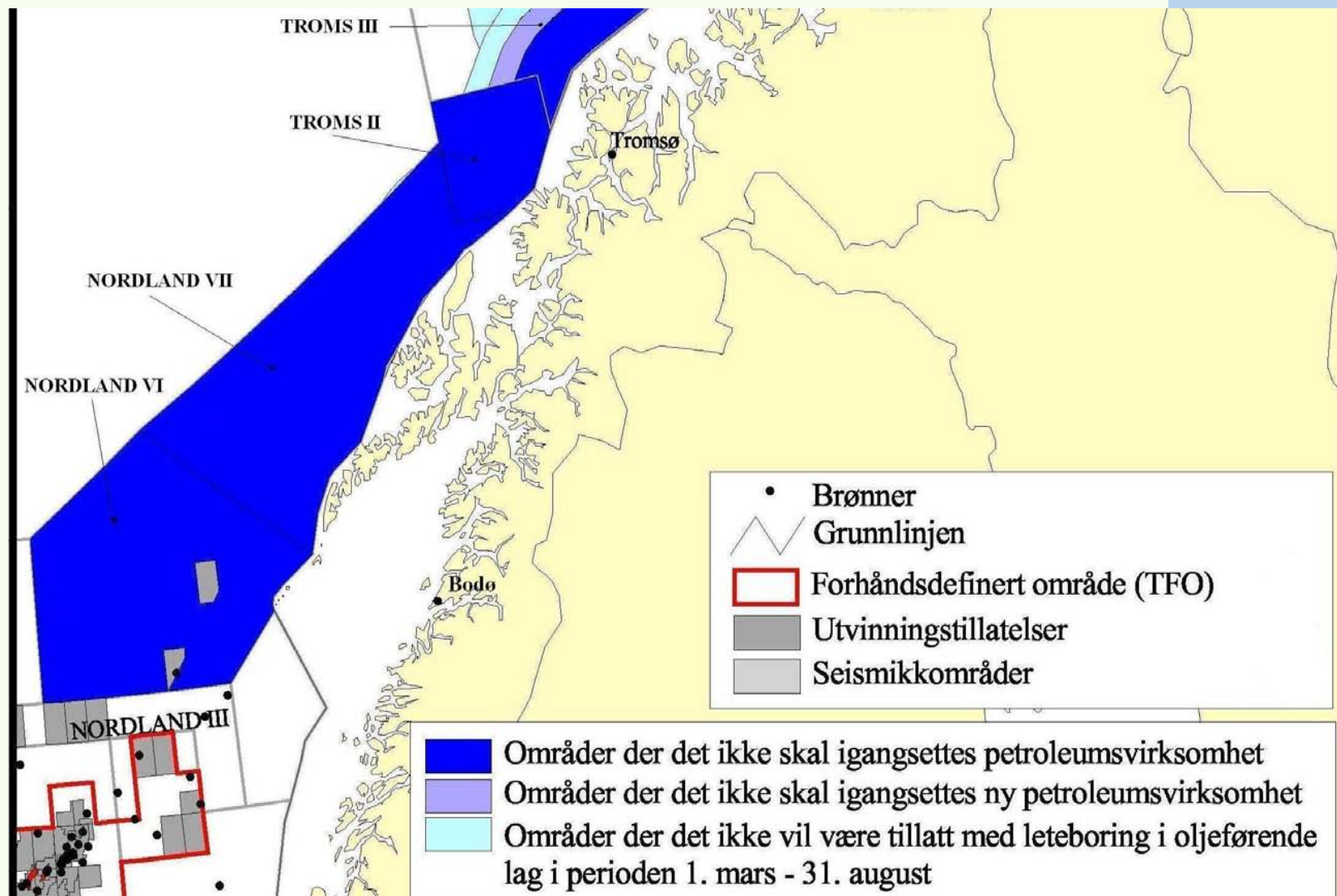
#### **4. Eggakanten (the edge of the continental shelf)**

- No starting-up of petroleum activities during this Storting (Parliament, i.e. until September 2009) in the area of Eggakanten, from the edge of Tromsøflaket and further north.
- Mapping of the seabed and geological mapping will take place in this area, as well as registering of seabirds.
  - SEAPOP (mapping of seabirds) and MAREANO (mapping of seabed conditions). Mapping will initially give priority to this area.

#### **5. Tromsøflaket (Tromsø bank area)**

- The limits that follow from point 3 regarding the coastal zone also apply to Tromsøflaket.
- At Tromsøflaket beyond 65 km, exploratory drilling will not be allowed in oil-bearing layers in the period 1 March–31 August.

*Framework for petroleum activities*



### **6. Nordland VII and Troms II**

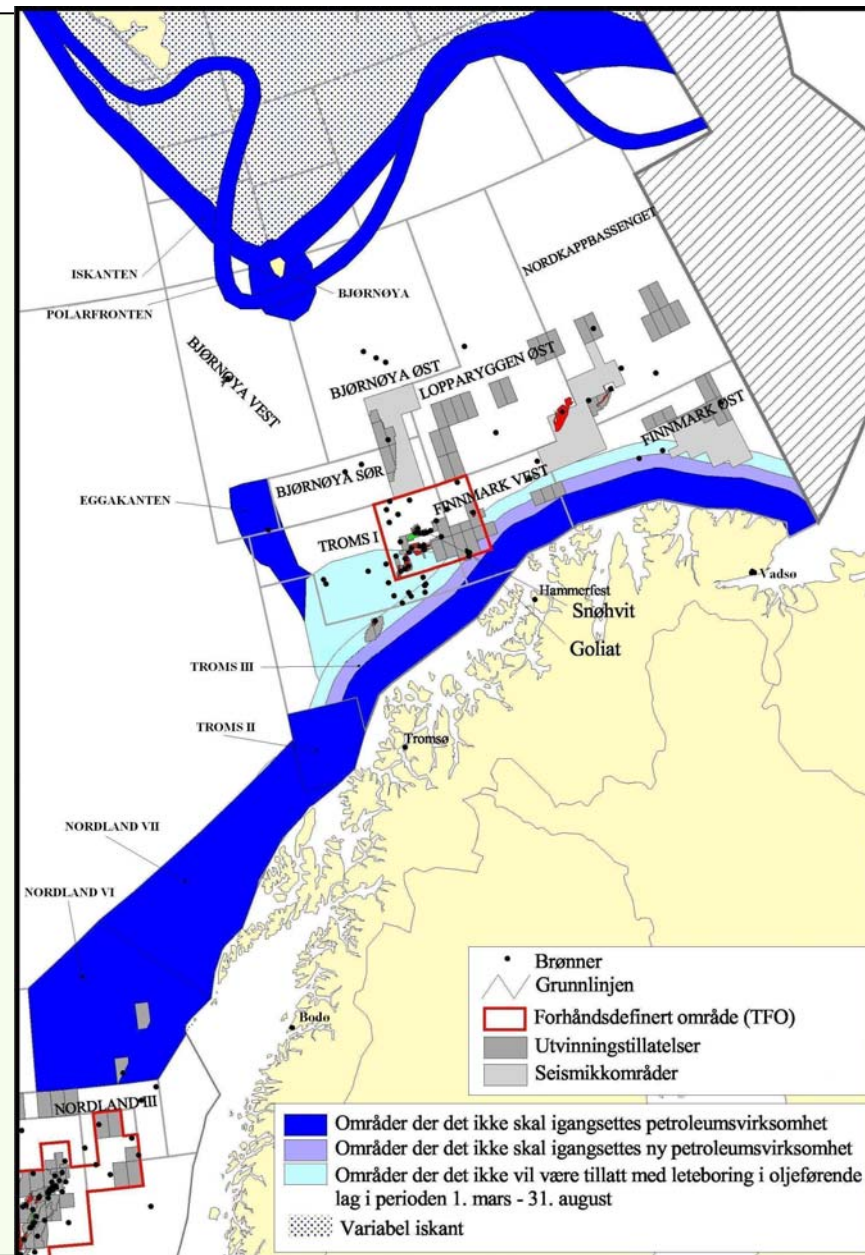
- No starting-up of petroleum activities in Nordland VII and Troms II during this Storting. The question of petroleum activities in these areas will be considered in connection with the review of the Integrated Management Plan in 2010.
- There is a need to strengthen the knowledge base in these areas. The following research and mapping projects are to be carried out:
  - SEAPOP (mapping of seabirds) will give priority to Lofoten/Vesterålen.
  - MAREANO (mapping of seabed conditions) will give priority to Lofoten/Vesterålen.
  - The Norwegian Petroleum Directorate will carry out geological mapping in the area. This includes sampling of seismic data. There will be no impact assessments on the opening of these areas during this Storting.

### **7. Nordland VI**

- No starting-up of petroleum activities in Nordland VI during this Storting (Parliament).

## Framework for petroleum activities

- The Integrated Management Plan is not a static plan. It is to be updated on a regular basis. The first update will be in 2010.



*We have a solid scientific basis, but there is still a significant need for more knowledge*

We have extensive knowledge about the Barents Sea – Lofoten area. Needs for further knowledge are identified in a prioritised order

The Government will:

- Introduce a more coordinated monitoring system to follow the development of the ecosystems (pollution, stocks etc.)
- Strengthen research and mapping in the sea area.



## *Activities in other areas*

Key topics: Environmentally hazardous substances, biological diversity, the environmental risks associated with acute oil spills and the strengthening of international cooperation.

The Government will:

- Strengthen international cooperation on environmentally hazardous substances
- Work to stop illegal, unreported and unregulated fishing
- Suggest that IMO establish mandatory routing of ships at around 30 nautical miles from the coast line
- Work to secure the sustainable management of the whole Barents sea through close cooperation with Russia.



Kilde: Statens forurensningstilsyn/  
Norsk polarinstitutt



Foto: Erling Svendsen



Kilde: Frontline

## *Systematic follow-up and adaptation of the Plan*

The Government attaches great importance to a systematic and flexible follow-up of the Integrated Management Plan, based on new knowledge and developments.

The Integrated Management Plan is to be updated on a regular basis. The first update will be in 2010. The Ministry of Environment will coordinate the Government's follow-up of the Plan.

The Government will establish:

- *An advisory group for monitoring*
- *A forum for cooperation on environmental risks*
- *A scientific forum to follow-up and coordinate the scientific work*
- *A reference group*





<http://odin.dep.no/md/>

Foto: Hallvard Strøm, Norsk polarinstitutt