

Evaluation of Active Management of the Norwegian Government Pension Fund – Global

Andrew Ang

Ann F. Kaplan Professor of Business, Columbia Business School

William N. Goetzmann

Edwin J. Beinecke Professor of Finance and Management Studies, Yale School of Management

Stephen M. Schaefer

Professor of Finance, London Business School

Outline

- Summary of empirical studies of active management and the Efficient Market Hypothesis [EMH]
- Evaluation of NBIM's historical track record
- Recommendations on how the Fund's advantages can be exploited

Section I: Academic Evidence on Active Management



Active Management vs. Indexing

- Modern versions of the Efficient Markets Hypothesis [EMH] recognize real-world frictions, e.g. information, transactions costs, financing costs, etc
- Tests of the EMH recognize that there are multiple factors driving returns and the market portfolio is inefficient
- Tests on prices have produced violations of the EMH suggestive of the potential for active management
- Finding active managers who consistently deliver excess risk-adjusted returns is difficult

Section II:

Active Management of the Fund



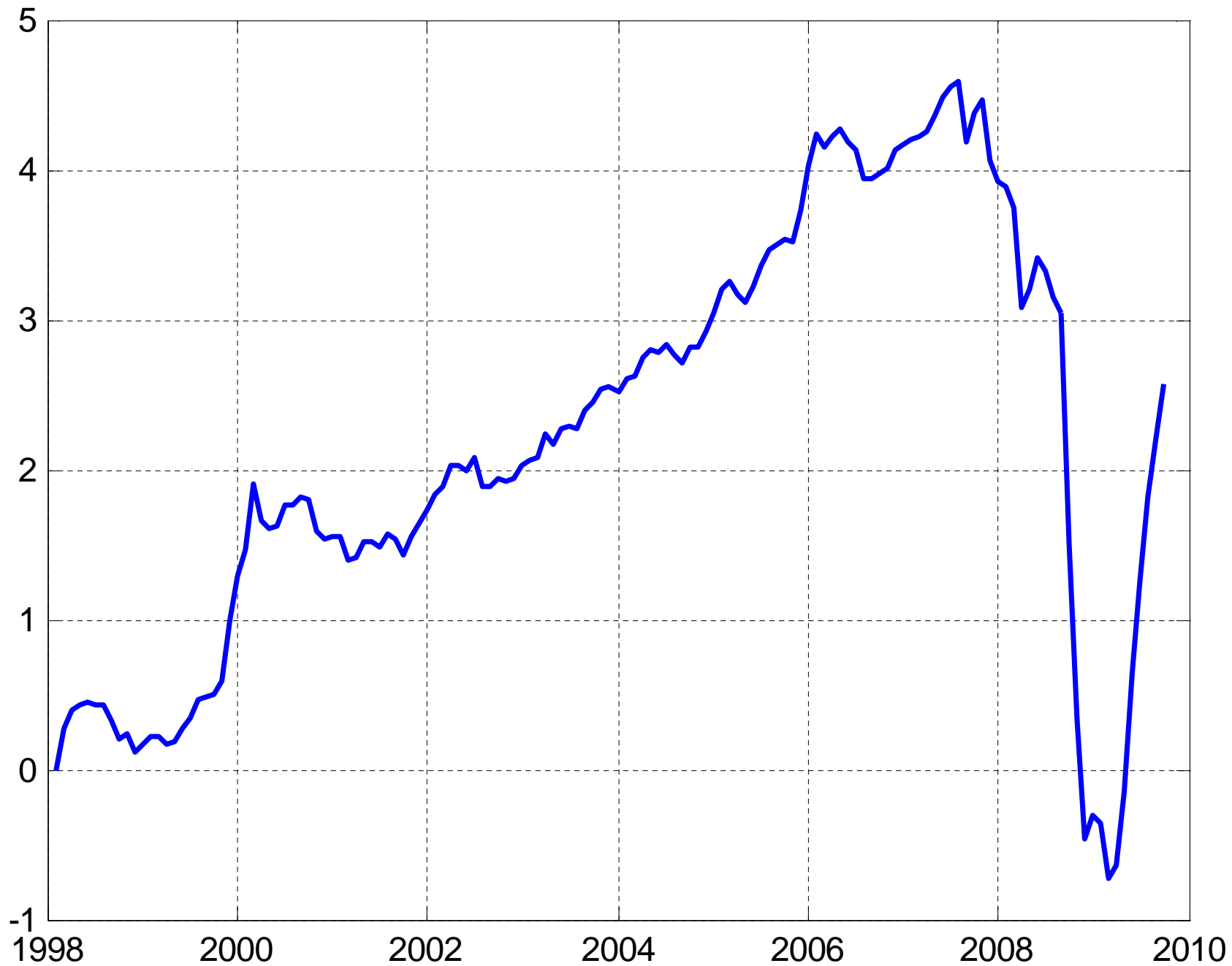
Analysis

- Overall fund, asset class level (fixed income and equities), internal and external levels
- Variance decompositions: benchmark vs active
- Active returns: averages [alpha] and risk (tracking error), autocorrelations, reward-to-risk ratios, higher moments (skewness)
- Factor exposure: (rolling) partial correlations, fitted factor exposures
 - Robustness to other “academic” factors
- Regime (break-date) analysis and rolling factor regressions
- Correlations to hedge fund strategies

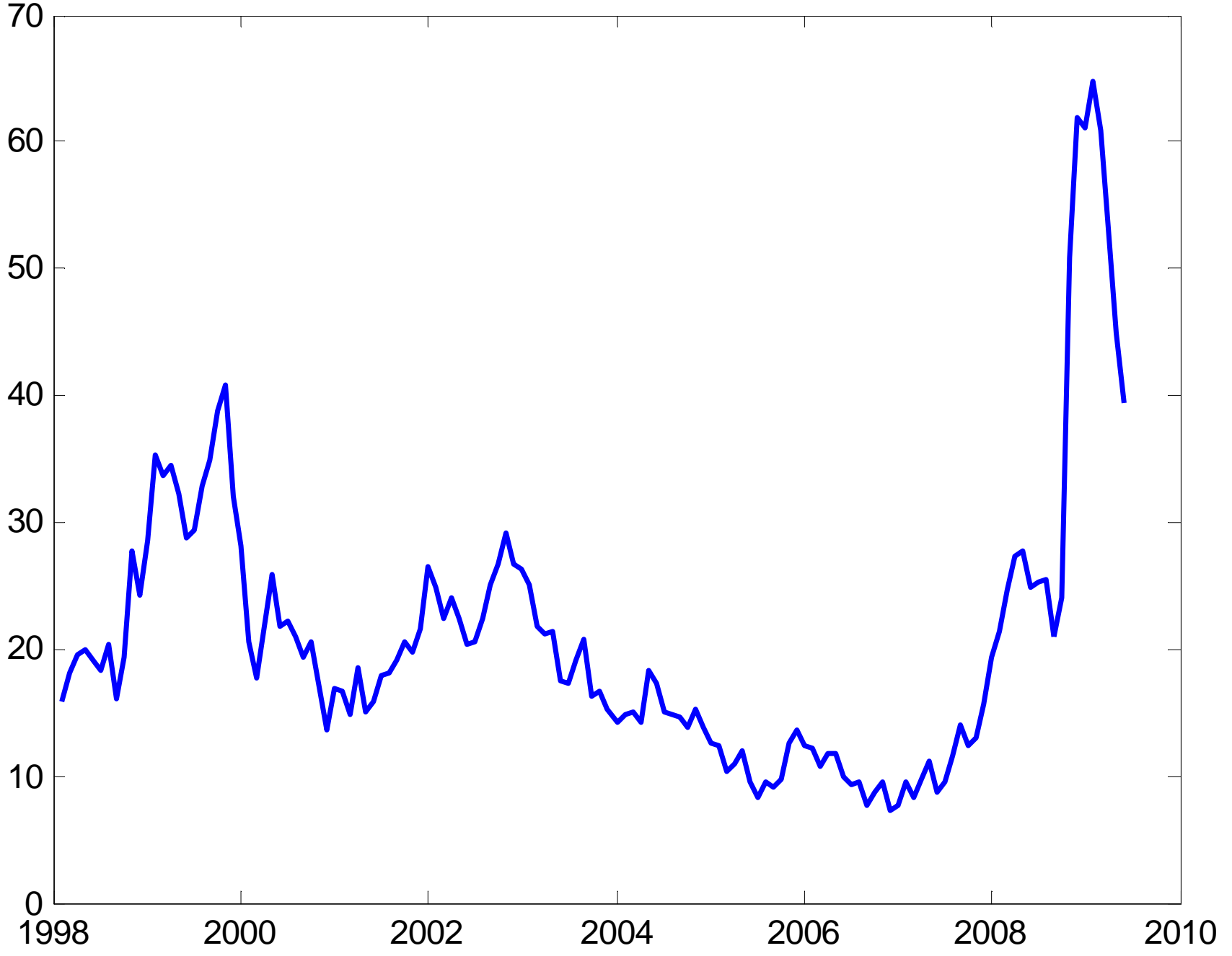
Main Points

- The amount of active risk taken by the Fund is very small but in general, has added value
- The small amount of active management has very large exposure to systematic factors: over 2/3rds of the active returns are attributable to systematic factors
- Many of these systematic factors, especially liquidity, volatility, and credit, fared very poorly during 2008 and early 2009 and are responsible for most of the active losses
- External active management also has large exposure to systematic factors
- The active losses are concentrated in fixed income, in both internal and external management

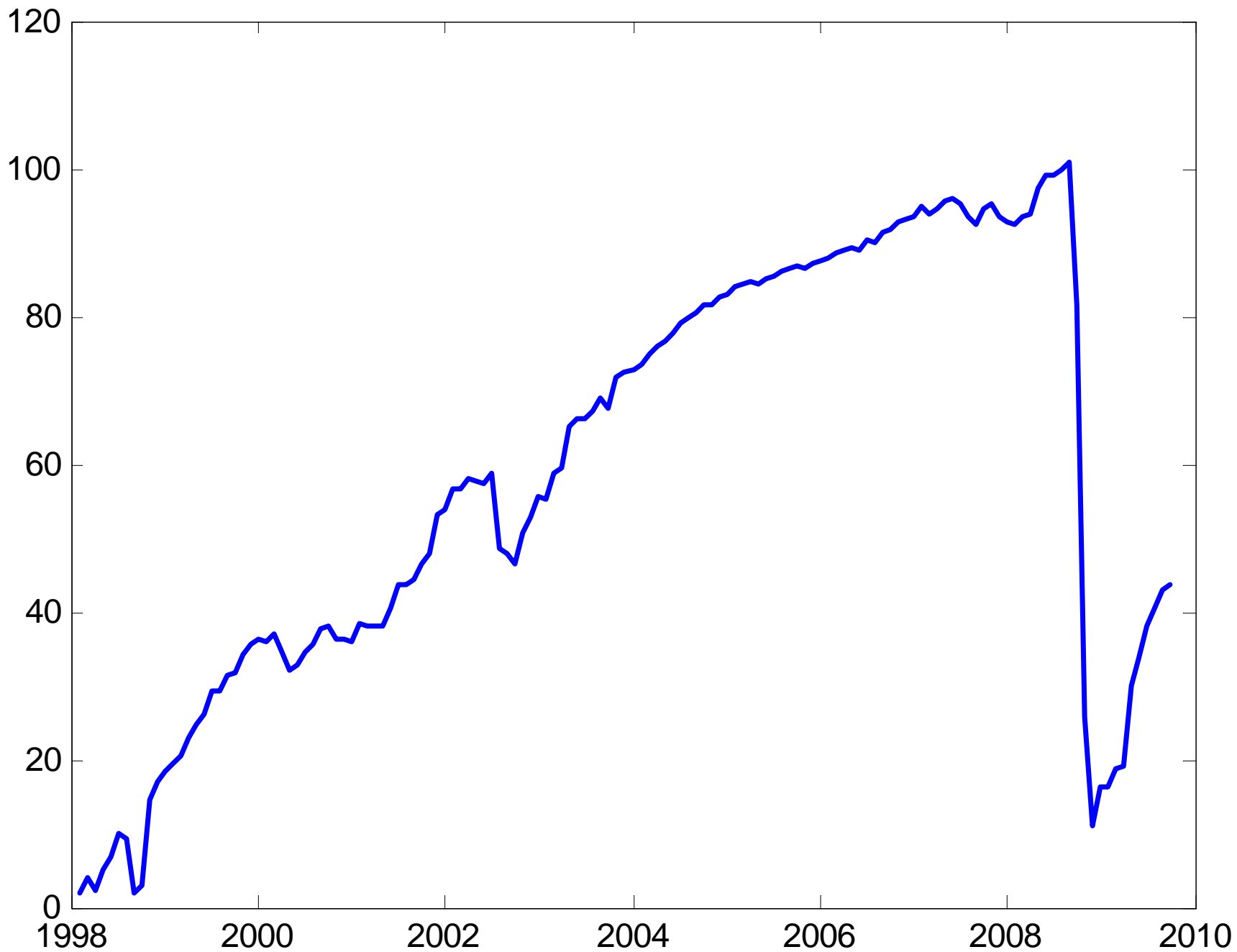
Overall Fund Cumulated Active Returns



Liquidity On-the-Run/Off-the-Run



Cumulated Returns on VOL



Overall Fund: Active Risk

- The amount of active risk in the Fund is very small

Variance Attribution

	Full Sample	Pre-2008
Benchmark Return	99.1%	99.7%
Active Return	0.9%	0.3%
Total Return	100.0%	100.0%

Overall Fund: Average Active Returns

- Active management has, in general, added value

Active Returns

		Active Returns			
		Mean	Autocorr	Skew	Reward-to-Risk Ratio
Full Sample	Coeff	0.02	0.55	-2.41	0.07
	P-value	0.56			
Pre-2008	Coeff	0.03	0.16	-0.30	0.15
	P-value	0.01			

Overall Fund: Systematic Factor Exposure

- A large fraction of active returns is related to systematic factors

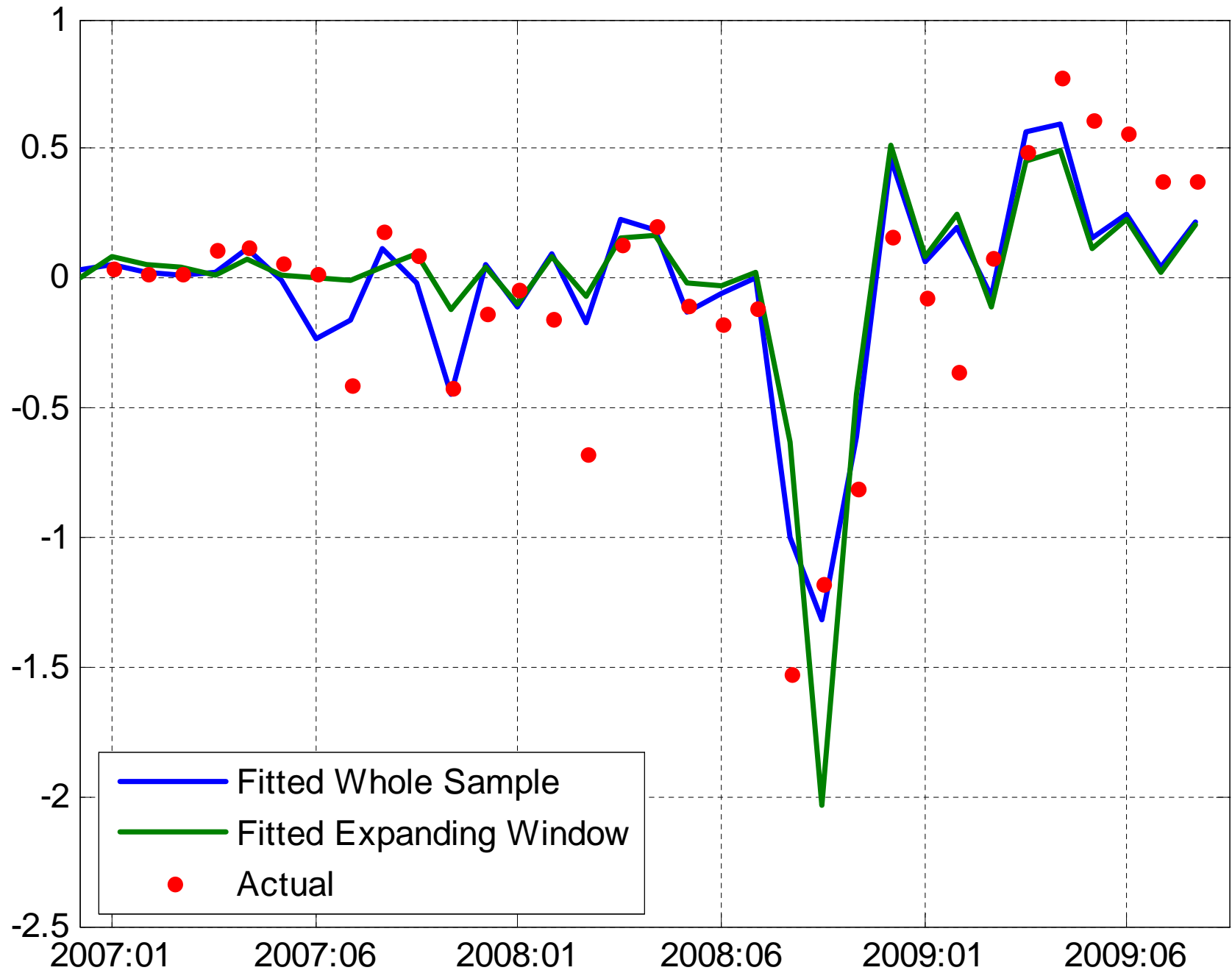
Partial Correlations of Active Returns with Systematic Factors

	Full Sample		Pre-2008	
	Partial Corr	P-value	Partial Corr	P-value
TERM	-0.17	0.05	-0.25	0.01
CREDITAa	0.40	0.00	0.02	0.81
CREDITBaa	-0.40	0.00	-0.16	0.09
CREDITHY	0.02	0.83	-0.01	0.90
FXCARRY	0.07	0.44	0.13	0.16
LIQUIDITY	0.31	0.00	0.25	0.01
VALGRTH	-0.35	0.00	-0.45	0.00
SMLG	0.21	0.01	0.44	0.00
MOM	-0.03	0.76	0.07	0.48
VOL	0.39	0.00	0.24	0.01

Overall Fund: Active Losses 2008-9

- Could the negative active returns over 2008-9 been anticipated?
- If the factor exposures had been estimated pre-2008 and the asset owner had some knowledge of the potential drawdowns of these factors, the Fund's losses over 2008-9 may have been within expected loss limits

GPFG Active Returns

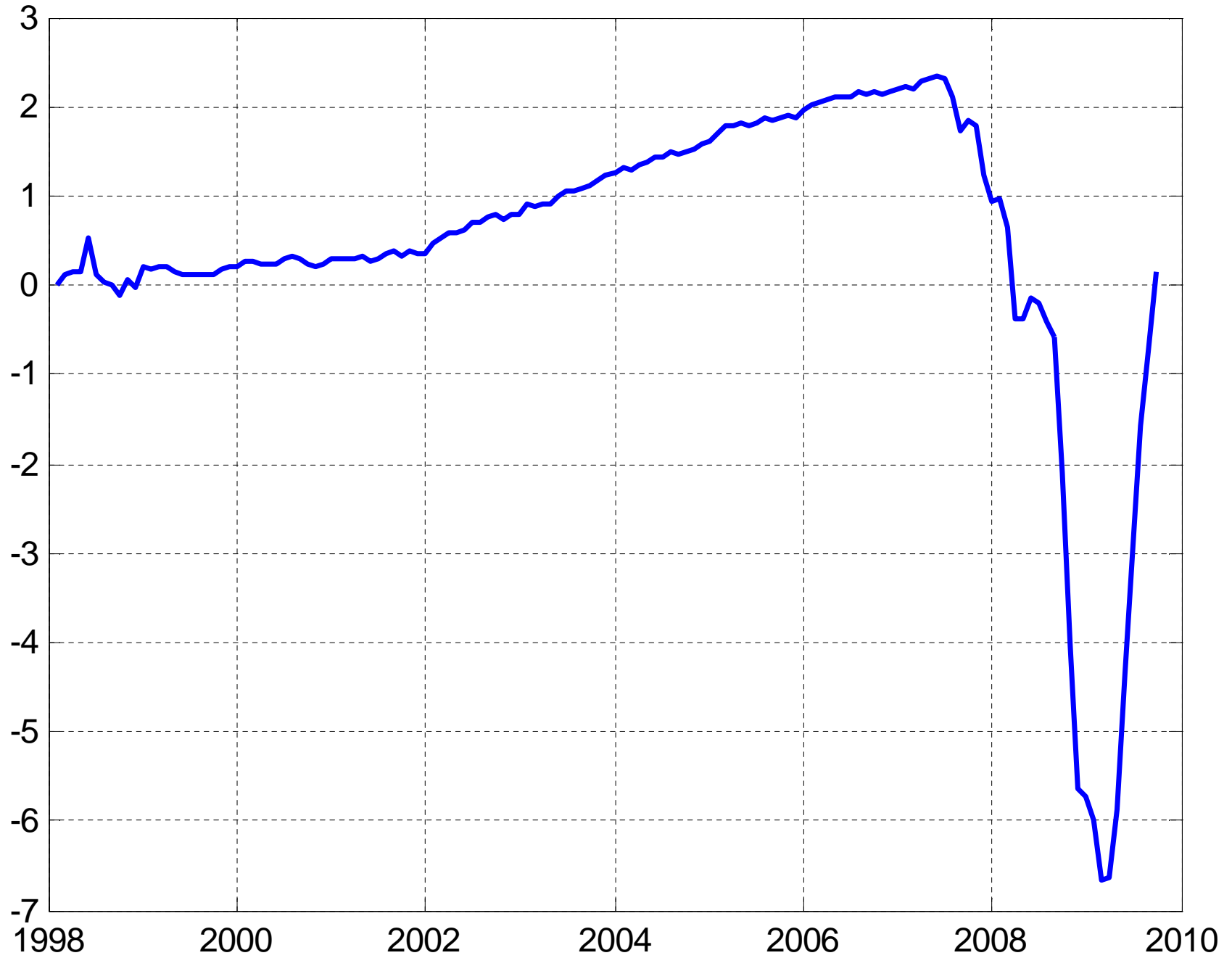


Overall Fund: Active Risk

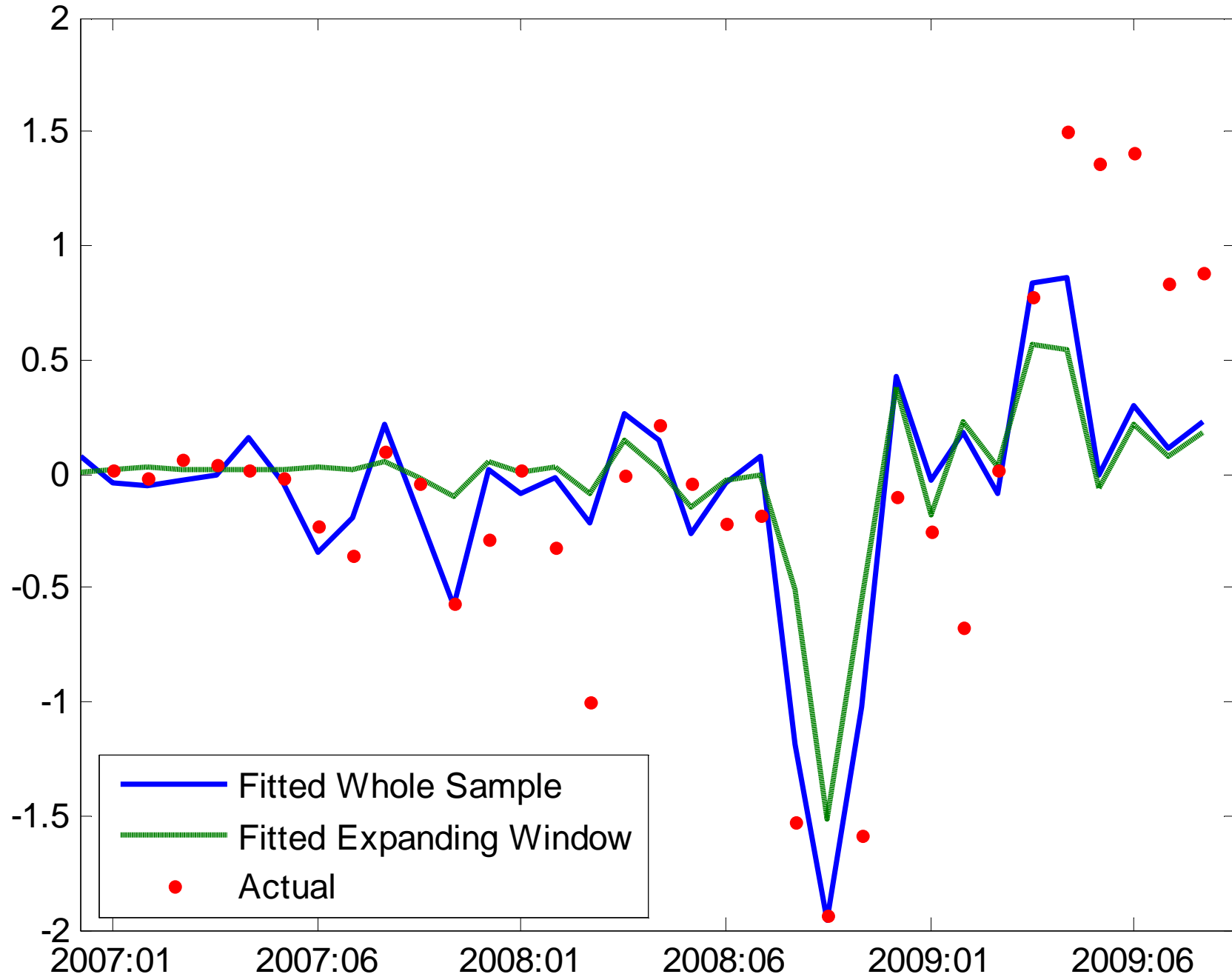
Tracking error limit of the Fund was exceeded post-2007

- Tracking error limit = 1.5% per annum
= 0.43% per month
- Amount of active risk since 1998 = 0.25% per month
- Amount of active risk post-2007 = 0.59% per month
- However, most of this increase in tracking error is due to high factor volatility
- We do not recommend a tracking error limit; tracking error targets or bands are more appropriate, combined with new factor benchmarks consisting of liquid securities

Cumulated Fixed Income Active Returns



Fixed Income Active Returns



External Funds

- $Ret = FundBmk + (Bmk - FundBmk) + (Ret - Bmk)$

Mandate decision is taken by NBIM

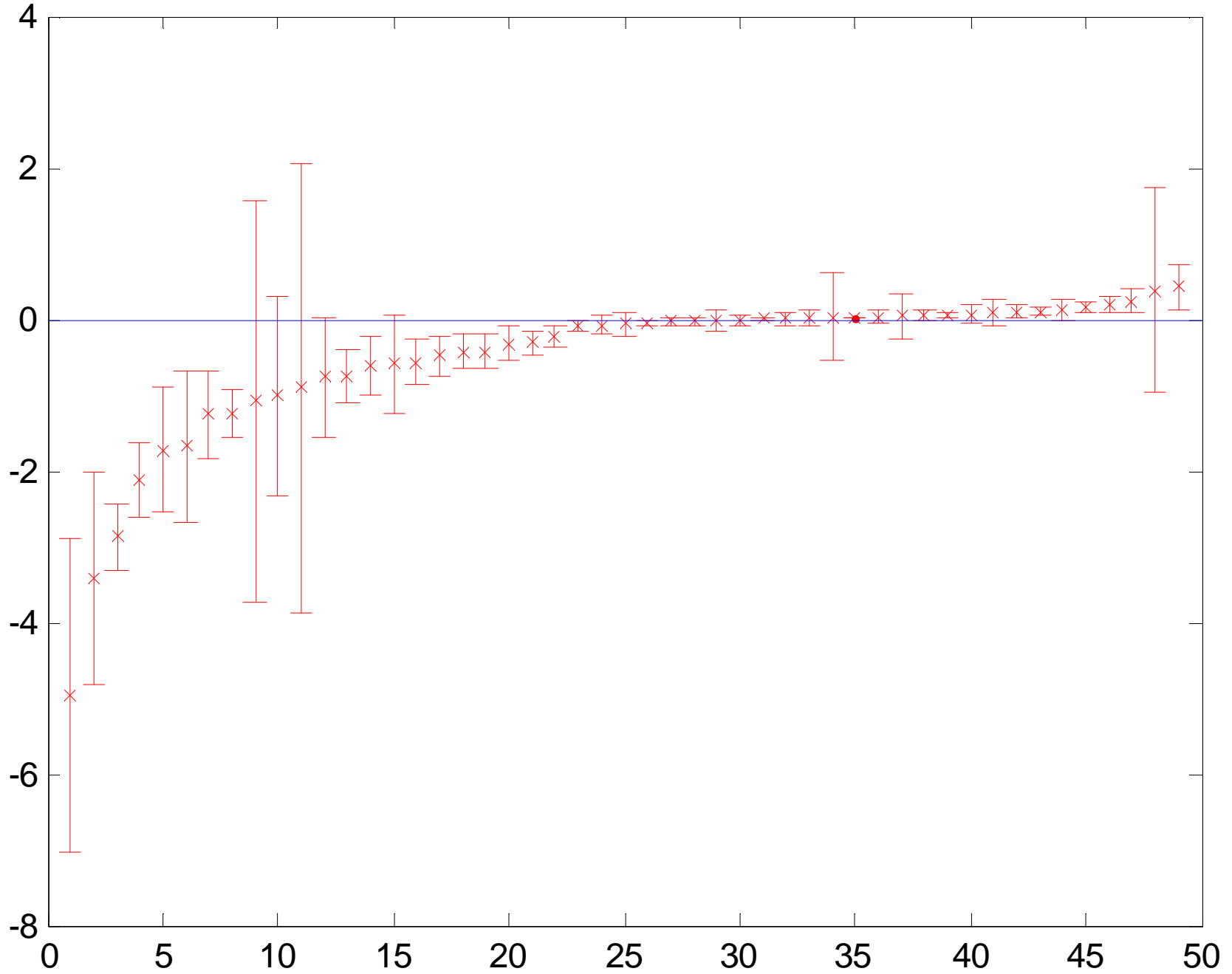


Active Return

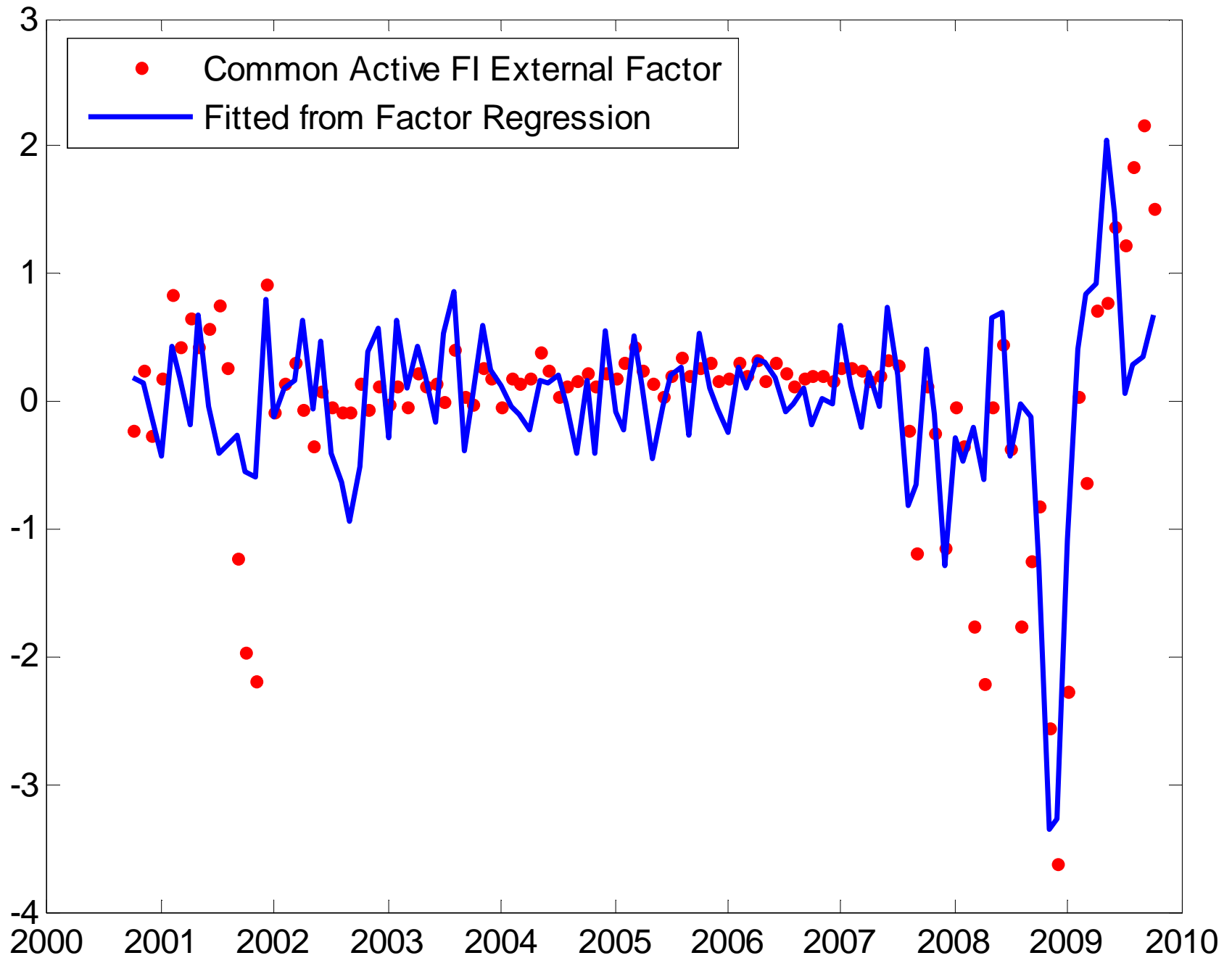


- Characterize only the active return of the external mandate

Fixed Income External Active Mean Returns and SEs



Common Active FI External Factor, $R^2 = 0.46$



Section III: Comparative Advantages and Capabilities



Factor-Based Investing

- Active management has played a small role in the overall performance of the fund
 - Contributed positively and may be beneficial for other aims
- Active returns have had large exposure to systematic risks
 - Mainly a result of bottom-up decisions
 - Large systematic exposure is first order
 - We believe this exposure is entirely appropriate
 - These factors earn risk premiums over the long run
- We recommend the Fund move to a more top-down, intentional approach to choosing factor exposure
 - Factor exposure should be an extension of current asset allocation policy

Factor-Based Investing

- Base investment philosophy on compensation for taking systematic risk
 - Alpha is difficult to capture in large scale
 - Alpha risk is often factor risk in disguise
 - Factor risk premiums are long-horizon investments
 - Should separate systematic risk vs true active returns in paying for active management
- Relative to standard market-weighted benchmarks (eg FTSE and Barcap), active management is one way to access factor risk premiums: the Fund should remain active in this context

Recommendation: Custom Benchmarks

- In-house, customized benchmarks on liquid securities
 - Recommend the Fund not be a passive follower of widely used indexes
 - Costs and distortions of following common passive indexes as many institutions track these indexes at the same time
 - The Fund is a natural provider of liquidity to investors forced to rebalanced to index weights and can reap liquidity premiums
 - Many widely used indexes, especially fixed income indexes, contain illiquid securities which are better held in other structures
 - Enhances the effectiveness of tracking error as a risk budgeting and risk management tool

Recommendation: Factor Benchmarks

- Express through exposure to factor risk
 - Fund already capturing premiums to multiple factor exposures, but this factor exposure should be made explicit
- Factor exposures should be in the Fund's benchmark
 - “Passive but dynamic”; “index but active”
 - Set desired amount of factor exposure at the level of the asset owner, not fund manager
 - Measure and build your own factors: ensure lowest possible cost, better risk management, etc
 - Use the factors to evaluate internal and external active management and alternative asset classes

Factor-Based Investing: Fund's Advantages

Factors fit into the Fund's comparative advantages

- Governance structure, especially transparency
 - Better communication of the risks of the Fund's strategies
 - Asset owner decides on which factors and the amount of factor risk
- Scale
 - Systematic factors can be implemented in large scale
- Long-term investment horizon
 - Allows the Fund to ride out periods of short-term losses from some factors which are negatively skewed
- Relationship to its management company, NBIM
 - NBIM has the expertise to implement factor benchmarks

Factor-Based Investing: Benefits

- Better understanding of risk-return trade-offs
 - Method to gauge the benefit of adding new factors or asset classes to the portfolio
 - Allows the asset owner to determine which factors should have large or small exposure
 - Amount of active risk independent of factors could be lower than today since factor risk is brought into the benchmark
 - Raises the bar for active management
 - More robust portfolios
-

Factor-Based Investing: Challenges

- Lack of widely recognized factor benchmarks
 - NBIM has expertise in maintaining and tracking indexes
- No long time series
 - Many factors have 20-30 years (some 100+ years) of history. Factors without long time series would not be in the benchmark
- Complete set of factors is unknown
 - Removes systematic factor risk from active returns that should be obtainable more cheaply than true active strategies
- Extend asset to factor allocation
 - Need for more public education on factor risk-return trade-offs
- New governance structure
 - Recommend a creating a new “Factor Benchmark” Division

Factor-Based Investing: Candidate Factors

- Term risk
- Credit risk
- Value-growth risk
- Small-large risk
- Momentum risk
- Volatility risk

All these factor portfolios could be created at low cost by NBIM

Factor-Based Investing: Factor Allocation

- After creating factor portfolios, do risk-return analysis on each factor
- Determine how much factor exposure is desired, similar to the decision on the optimal equity-bond mix
 - Extension of asset allocation.
- Set long-run targets, like the 60%-40% equity-bond target
 - Important to rebalance factor exposures just as currently done for asset exposures
 - Automatic rebalancing essential to avoid arbitrary and time-inconsistent actions

Recommendation: Horizon Buckets

- Categorize assets by horizon
 - Cash
 - Short-term (e.g. listed equities, liquid fixed income)
 - Long-term (e.g. illiquid fixed income, real estate, strategies with long verification horizons)
- Horizon buckets set appropriate expectations
 - Appropriate performance review
 - Appropriate future liquidity planning

Overall Summary

- Summary of empirical studies of active management and the Efficient Market Hypothesis [EMH]
 - There is no compelling evidence to recommend indexing but finding managers with excess risk-adjusted returns is difficult
- Evaluation of NBIM's historical track record
 - The active risk of the Fund is overall small, has a positive mean, and has large exposure to systematic factors
- Recommendation of how the Fund's advantages can be exploited
 - Allow the asset owner to decide how much factor risk is appropriate by bringing factors into the Fund's benchmark and creating horizon categories for assets