



*Byhaven 2200, Copenhagen
(2012-2017) – R.I.P.*

*A vision for
urban farming,
a vision for
sustainable cities?*

Rebecca Rutt

Assistant Professor of
European environmental policy

Institute for Food and
Resource Economics (IFRO),

University of Copenhagen

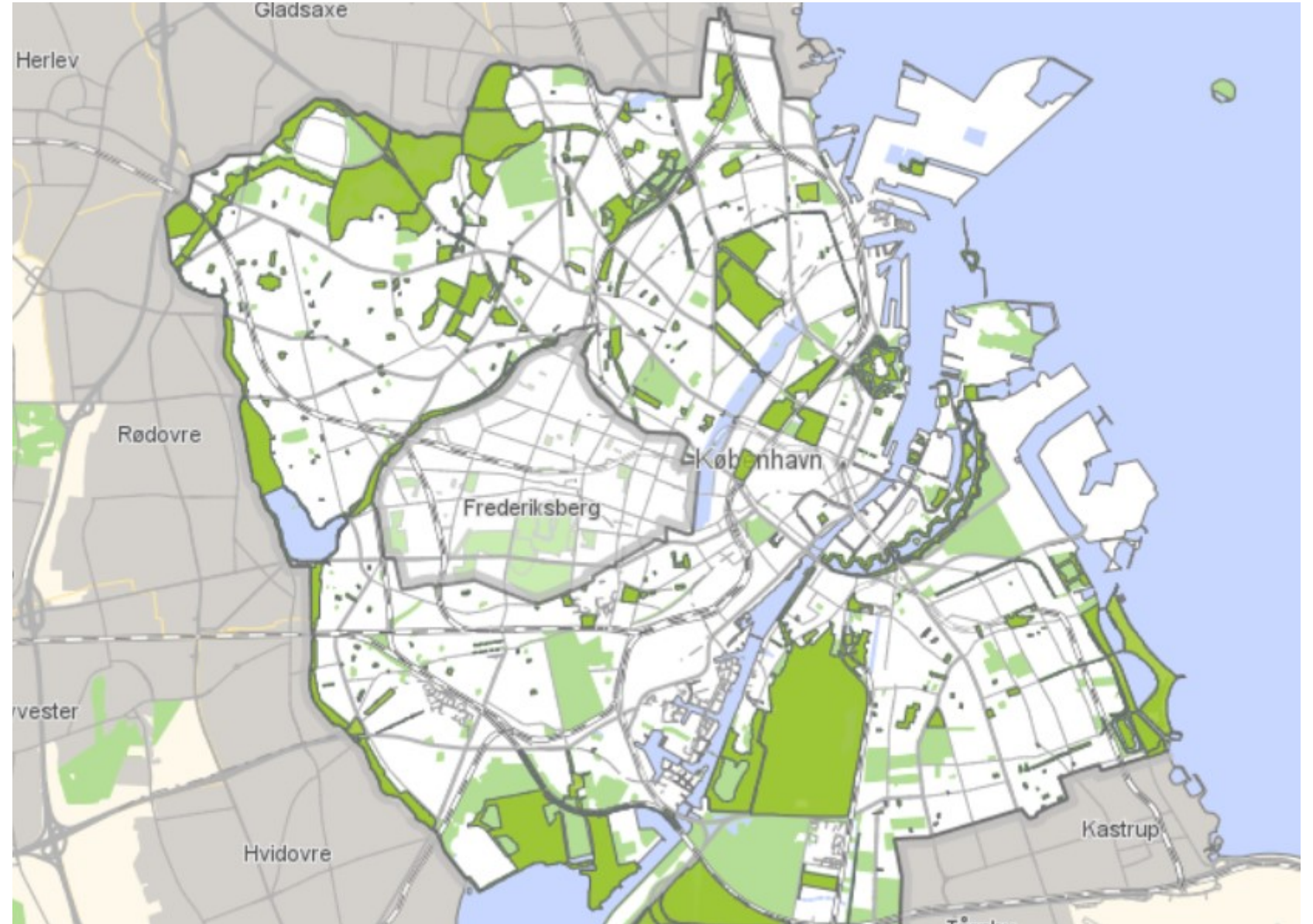
Urbant landbruk kan...

***“bidra til bærekraftig byutvikling,
integrering, utdanning og
opplæring, arbeidstrening,
kunnskapsutvikling, innovasjon og
klimatilpasning”...***

Micro, Macro...



Distribution,
access, and
space to
grow



Trade-offs & space for all



Trade-
offs &
space
for all



Flexible
regulation
and
oversight



GENTRIFICATION
DISPLACEMENT
LOCAL RESIDENTS

BYNATUR I
KØBENHAVN
Strategi 2015-2025



MOVING TO LIVE WORK STUDY BUSINESS

Creating the liveable city

Copenhagen has a unique big-city environment with **green areas**, a clean harbour and a world famous cycling culture.

In 2014, the British magazine "Monocle" crowned Copenhagen number one in the list of "The World's Top 25 Most Liveable Cities" for the third time.

The magazine highlights, amongst other characteristics, the scale of the city, its architecture, the clean harbour, the effectiveness of its transport system and bicycles.

Living in the city and taking part in its life is an active choice for most people. We go down to the café, cycle to work, take a dip in the harbour or go to a concert on one of the city squares. We can do these things because Copenhagen has a unique big-city environment with green areas, a clean harbour and a world famous cycling culture.



Ecological gentrification

**‘Sustainable’?
‘Innovative’?**



A satellite night view of the Earth, showing the continents of North and South America illuminated by city lights. The lights are concentrated in major urban centers and along coastlines, creating a glowing pattern against the dark blue of the oceans. A semi-transparent grey rectangular box is centered over the image, containing the text "Let's get macro." in white. The word "macro" is underlined.

Let's get macro.

(Stable)
resources,
political
will

LÆSETID: 3 MIN.

Københavns Kommune nedlægger én stilling og må derfor lukke 39 grønne frivilligprojekter

På trods af Københavns Kommunes mål om at inddrage frivillige i naturplejen lukker den nu 39 grønne projekter skabt af frivillige. Årsagen er, at én stilling nedlægges på rådhuset som konsekvens af besparelser

Prags Byhaver er en af de 39 grønne frivilligprojekter, der skal lukkes efter fyringen af frivilligkoordinatoren i Københavns Kommune.

 Tine Sletting



Indland

22. december 2018

Kommentarer (27)



Laura Friis Wang

 Email  Twitter

Få Laura Friis Wangs artikler på mail

Fra næste år er det slut med, at frivillige i Københavns Kommune hjælper med at passe



(Real)
motivation
and
capacity





Food
sovereignty,
food
democracy





Regenerative
rather than
'sustainable'
agriculture

A vision for
urban farming?

A vision for
sustainable
cities of the
future?



Thank you!